



**POLITECNICO  
MILANO 1863**

# **Welcome Meeting for International Students Management Engineering Programs**

13.02.2024 | Sergio Terzi, Martina Sani

# Getting to know each other



Please join us at

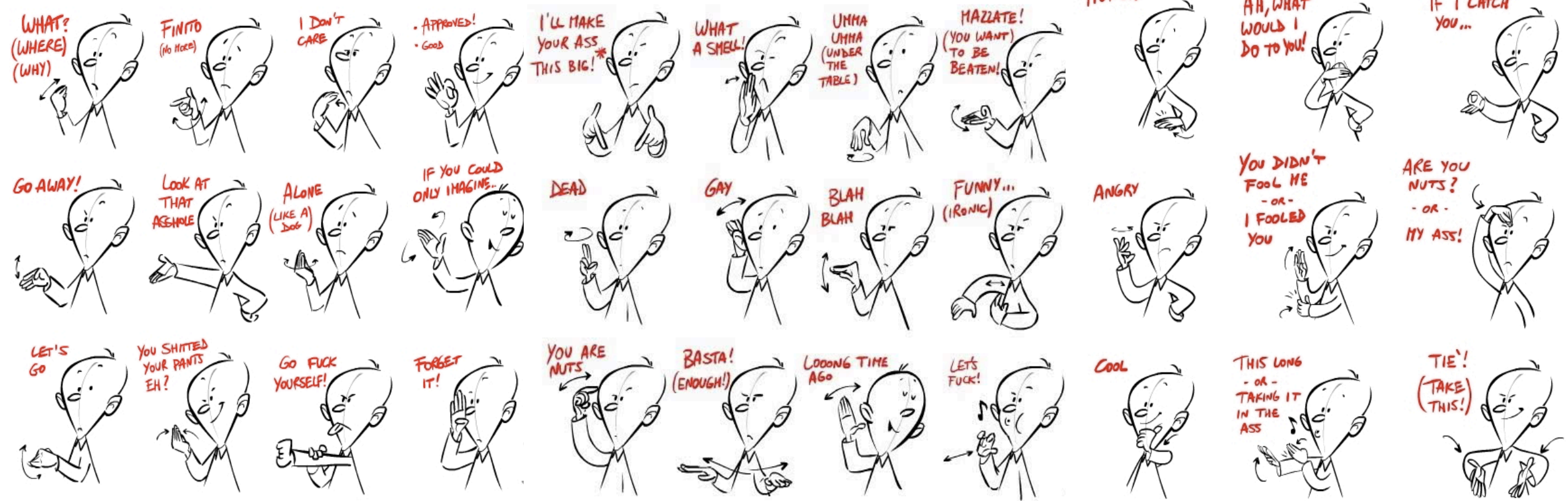
[PollEv.com/polimi2024](https://PollEv.com/polimi2024)

# Welcome to Politecnico di Milano

## - ITALIAN POPULAR GESTURES - (JUST A FEW.)

## - ITALIAN POPULAR GESTURES - CHAPTER II

## - ITALIAN POPULAR GESTURES - CHAPTER III





## Our Community (2024 data)

**Over 49,000**

BSc and MSc students

**8,230**

International students

**2,000**

PhD students

**1,282**

Professors

**742**

Postdocs

**225,000**

Alumni

**1,382**

Technical-  
administrative staff

**558**

Researchers

# Departments

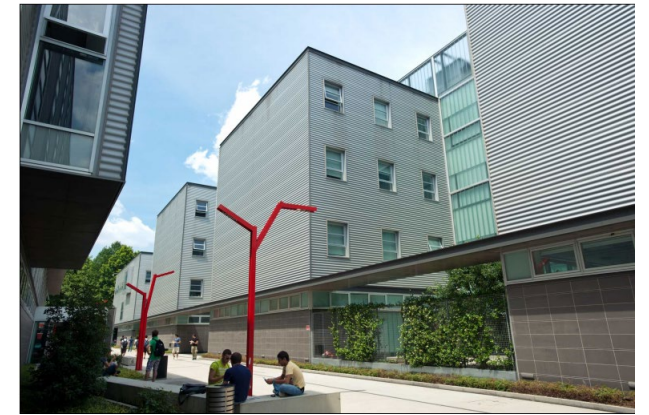
- Architecture and Urban Studies
- Architecture, Built Environment and Construction Engineering
- Chemistry, Materials and Chemical Engineering
- Design
- Electronics, Information and Bioengineering
- Energy
- Physics
- Civil and Environmental Engineering
- **Management, Economics and Industrial Engineering**
- Mathematics
- Mechanical Engineering
- Aerospace Science and Technology

# POLIMI School of Management

01



# POLIMI School of Management



# Accreditations, rankings, memberships


The POLIMI School of Management holds the **Triple crown**, the three most prestigious accreditations for business schools on a worldwide level:

- EQUIS, since 2007
- AMBA (Association of MBAs) since 2013
- AACSB (Advance Collegiate Schools of Business) since 2021





# Research Lines



Innovation in the Age of  
Distributed Knowledge,  
Artificial Intelligence  
and Creativity



Supply Chain Management  
in a Rapidly Changing  
Context



Digital Innovation and  
Transformation



Energy Transition:  
Management Policy and  
Economics



Innovating Healthcare  
and Life Science  
for Tomorrow



Entrepreneurship,  
Finance &  
Venture Growth




Innovating Public  
Services and Cultural  
Institutions



Manufacturing  
of the Future



Technologies, Data  
and Strategies for  
Customer Centricity



New Dynamics and  
Impact of Globalization



Transformative  
Sustainability  
Strategies for Impact

# Bachelor & Master of Science Programs in Management Engineering

02

# Bachelor & Master of Science Programs in Management Engineering

## PROGRAMS

**3-year Bachelor of Science** (taught in Italian)

**2-year MSc in Management Engineering** (taught in English)

## FIGURES

Every year **800 and 900 students** enter the BSc programme and the MSc programme respectively.

About 2.700 students overall

## PLACEMENT

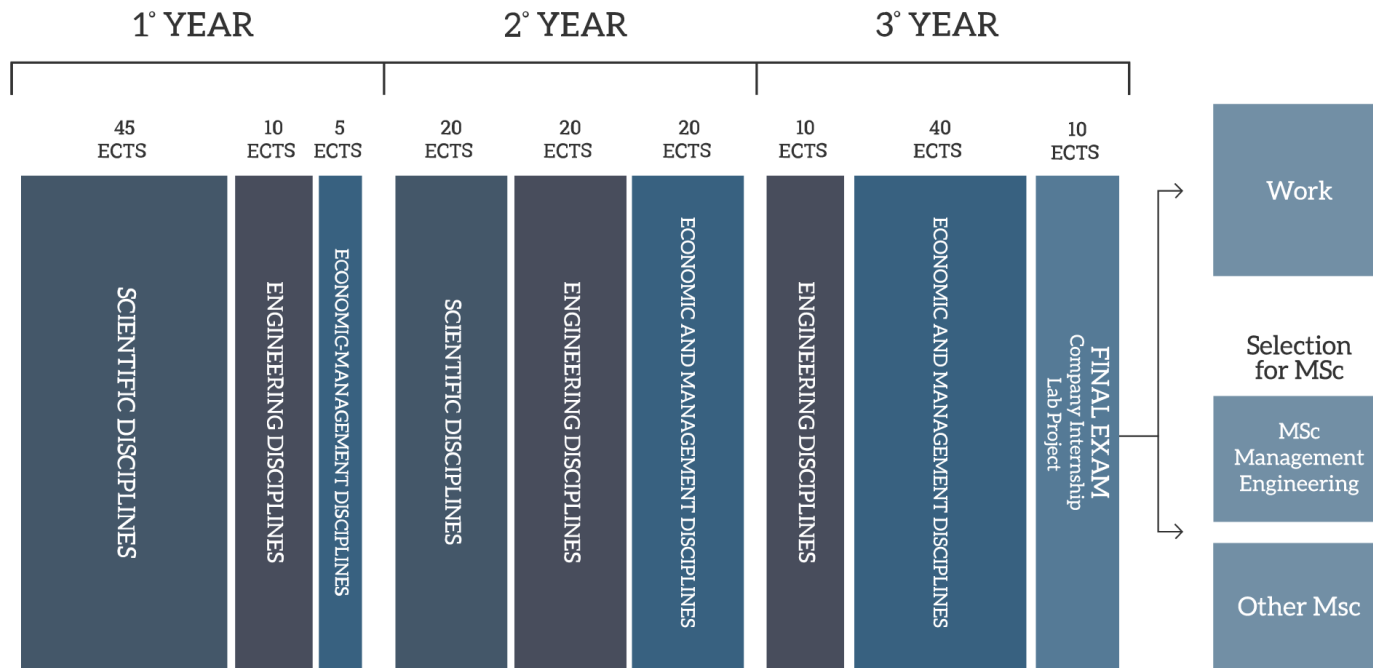
**98%** of placement **within 1 year from graduation**

## MOBILITY

Strong opportunities for experiences abroad through exchanges and double degree programmes.

**+400** incoming students every year

# Bachelor of Science in Management Engineering



One section taught in English has been activated

- **Economics 2 (Macroeconomics)**
- **Business Management and Organization**
- **Industrial Plants Management**

Three-year program  
**180 ECTS credits**

## First year

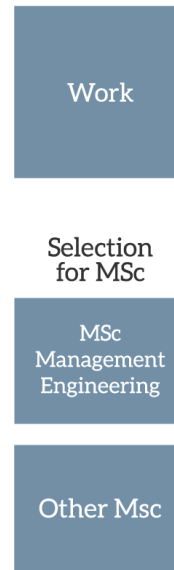
Strong component of scientific disciplines + introduction to some engineering and economic disciplines.

## Second year

Focus on modelling and digital skills, + business structure and its operational activities.

## Third year

One engineering discipline of your choice with a deep focus in management, organizational and industrial dynamics, with special emphasis on data analysis.





# Master of Science in Management Engineering

Two-year program  
120 ECTS credits

CORE CURRICULUM			MAJOR	ELECTIVE	
60 ECTS			25 ECTS	20 ECTS	
Accounting, Finance & Control	Strategy & Marketing	Leadership & Innovation	3 OUT OF 4	Industry 4.0	Free selection of courses for a customized and multidisciplinary curriculum
			Quality Data Analysis Operations Management Logistics Management Industrial Technologies	Industrial Management	
			<b>Business &amp; Industrial Economics</b> +2 OUT OF 4	Supply Chain Management	
				Quality Data Analysis Operations Management Logistics Management Industrial Technologies	
			<b>Business &amp; Industrial Economics</b> +2 OUT OF 3	Energy Management	
				Operations Management Logistics Management Industrial Technologies	
			Entrepreneurship		
			Innovation Management		
			Complex Projects Business		
			International Business		
			Finance		
			MASTER THESIS 15 ECTS		

## First year

Focus on providing a common knowledge basis that characterizes the Master of Science program

## Second year

Dedicated to developing vertical competencies within 14 Majors, focusing on different specialized disciplines.

Some free choice courses are available to give students the possibility of receiving a multidisciplinary and customized education.

# International Exchanges

## STUDENTS MOBILITY PER YEAR

450 Outgoing students

400 Incoming students

## AGREEMENTS

225 Exchange Agreements

53 Double Degree Agreements

22 Agreements for the PhD  
Program



**What's next?**

**03**

# Learning Agreement

Your Learning agreement must be approved by your sending institution before being submitted to Politecnico di Milano

Following the implementation of the new **OLA Dashboard** for the submission of the Learning Agreement, we kindly invite you to send your LA, following the instructions [here](#).

How to get it signed:

**Learning Agreement on paper:** send it to the International Mobility Unit ([exchange-bovisa@polimi.it](mailto:exchange-bovisa@polimi.it))

**Online Learning Agreement:** submitted through the Erasmus+ Dashboard, the document will be received and approved by the Academic Mobility Coordinator



# The Study Plan

It can be changed **every 6 months** in the dedicated time-window:

Sept/Oct – Feb/Mar

The Major can only be changed in September

Students must fill out their **Study Plan online**, based on their **Learning Agreement** and following the instructions and deadlines provided by the [International Mobility Unit](#).

The Study Plan registration will activate :

- **Exam registration**
- **Access to online materials** provided by your Faculty (BeeP portal)
- **Other online services**

To know more, please follow this [link](#)

Read carefully the programme structure at the following [link](#)

# Course Registration and Structure

By submitting your **Study Plan online**, you can register for classes.

- Courses run by semester:
  - Sept/Dec (exams in Jan/Feb)
  - Feb/June (exams in June/July)
- Exchange students can enroll in **most Polimi classes (COURSE SELECTION)**
- A full-time student enrolls for approx. **30 ECTS** credits
- Timetable is approx. 2 half-days per week
- **Attendance** is for the most part **not mandatory**
- Many courses are streamed and classes are recorded (**Webex**), please check with professors
- **WeBeep** is the official Learning Management Systems, everything will be there!
- Most ME courses are **open** (no caps on courses) – with some **exceptions**
- Please pay attention to **class locations** : we have 6 Campuses!

## Final exams

Students **cannot** take exams for courses that are not included in their Study Plan.

- It is up to you to choose when to take the exam (following the provided academic calendar) but the exams must be **taken during regular exam calls** (Appelli)
- **Exam Calls** take place three times a year:
  - January/February
  - June/July
  - September
  - Some courses might have a mid-term exam (Nov - May)
- In order to take an exam, you **must sign up** in advance ([Online Services](#))
- You must provide an **ID Card** (with picture)
- **Exams** can be written, oral or a mix of both. Some courses (e.g. labs) evaluate also assignments given throughout the semester
- Exams are evaluated in 30 points (**minimum passing grade 18**)
- You may **refuse a grade** and try the exam again, according to the provided exam calendar (pay attention to professor's instructions)

# Final thesis

The Final Thesis is **ONLY** compulsory if you are a double degree student

- Keep in mind that if you are studying at Polimi to pursue an international **double degree**, you will be required to end your program by discussing a final thesis, as all Polimi students.
- In the above case, you must have a **Polimi supervisor**. Check with your sending School's requirements for the type of thesis (Polimi offers 2 options).
- For a **step-by-step guide** of the process for international double degree students please refer to the [Management Engineering website](#)





# Contacts

04

If you have any problem, please **FIRST** contact our **IMU**:  
[exchange-bovisa@polimi.it](mailto:exchange-bovisa@polimi.it)  
[doubleddegrees@polimi.it](mailto:doubleddegrees@polimi.it)

Then, if you have any other doubt,  
you can contact us at  
[international-dig@polimi.it](mailto:international-dig@polimi.it)

## Management Engineering

HOME PAGE PRESENTATION ▾ BACHELOR OF SCIENCE ▾ MASTER OF SCIENCE ▾ INTERNATIONAL EXPERIENCES ▾ EXTRA-CURRICULAR ACTIVITIES ▾ AFTER GRADUATION ▾ CONTACTS ▾

<https://management-eng.polimi.it/en>

2.641

Bachelor Degree Students

2.192

Master Degree Students

5.778

Alumni

450

Incoming Students

450

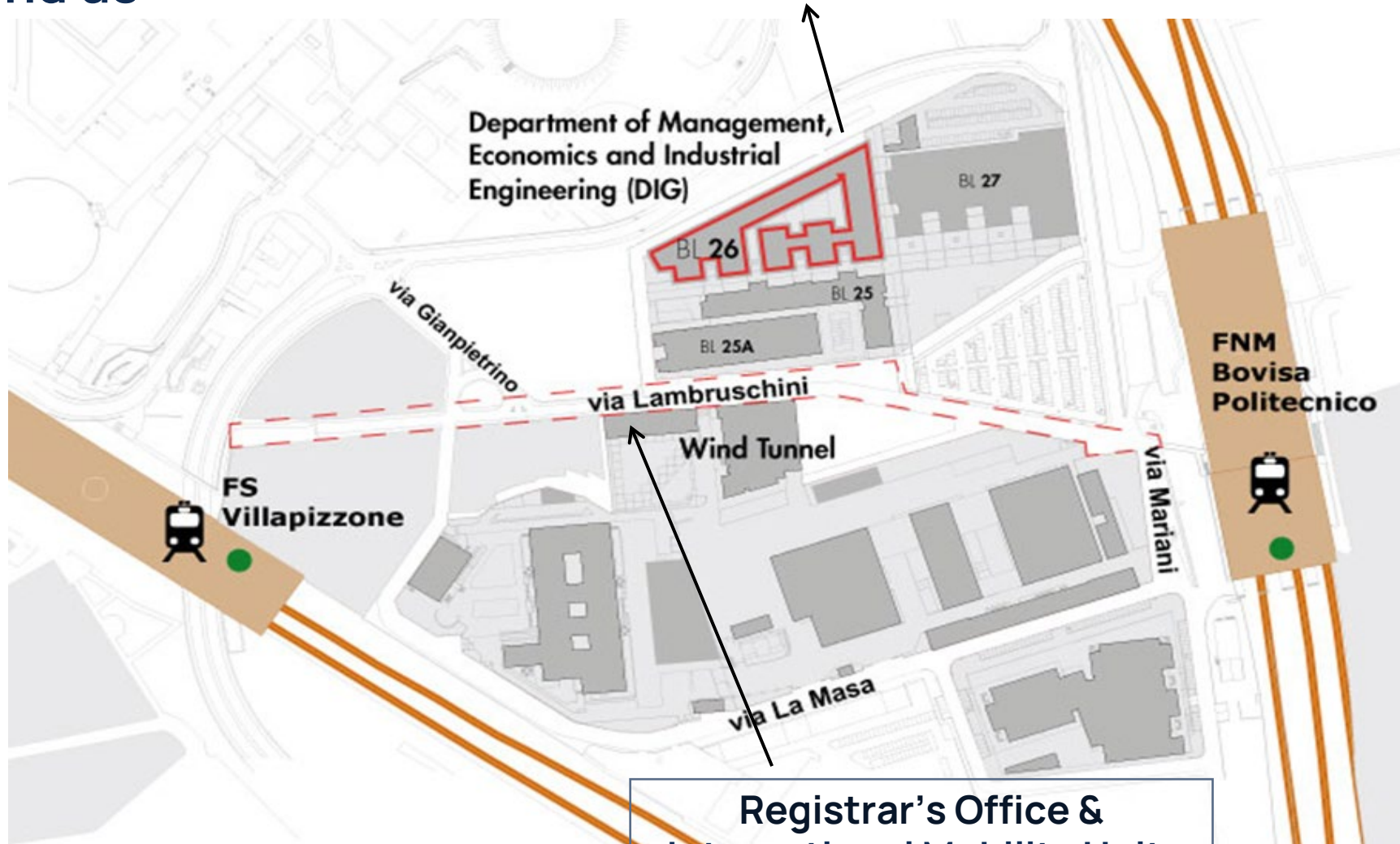
Outgoing Students

The study course in **Management Engineering** was created to respond to the continuous change in the context in which companies compete. In this scenario, engineers are increasingly required to combine traditional technical roles with more transversal competences and attitudes such as understanding consumption scenarios, developing innovative solutions, analyzing organizational dynamics and designing new competitive models.

The professional profile of the Management Engineer stems from these needs as an **engineer of change and innovation**, trained to design and manage systems in which technological variables interact with economic and organizational ones in a complex way.

## Where to find us

**Program Office & Intl. Relations Office:**  
Via Lambruschini 4/b



**Registrar's Office & International Mobility Unit:**  
Via Lambruschini 15



# Enjoy Milan!

