

DEPARTEMENT OF MANAGEMENT, ECONOMICS AND INDUSTRIAL ENGINEERING



POLITECNICO
MILANO 1863

*Overview Of // the Management Engineering
Exchanges And Double Degree Programmes*

Diletta Fiasca
International Partnerships and Mobility
international-dig@polimi.it
Office 0.44 - DIG Department



Martina Sani
International Partnerships and Mobility
international-dig@polimi.it
Office 0.44 - DIG Department



Prof. Sergio Terzi
Academic Coordinator for Exchanges & Mobility for ME
students
Coordinator of the ME International Double Degrees
2° Floor - DIG Department

INTERESTED IN STUDYING ABROAD?

POLIMI offers many types of study abroad opportunities: brief study abroad exchanges, semester-long exchanges, dual and double degrees, alliances, one-year programs...

The most updated set of information for POLIMI offerings can be found on the POLIMI International Mobility webpage at: <https://www.polimi.it/en/campuses-and-services/international-mobility/study-abroad>



POLITECNICO
MILANO 1863

DIPARTIMENTO DI
INGEGNERIA GESTIONALE

MOBILITY AND AGREEMENTS

Strong commitment towards offering **ME** students diverse **experiences abroad**

STUDENTS MOBILITY PER YEAR

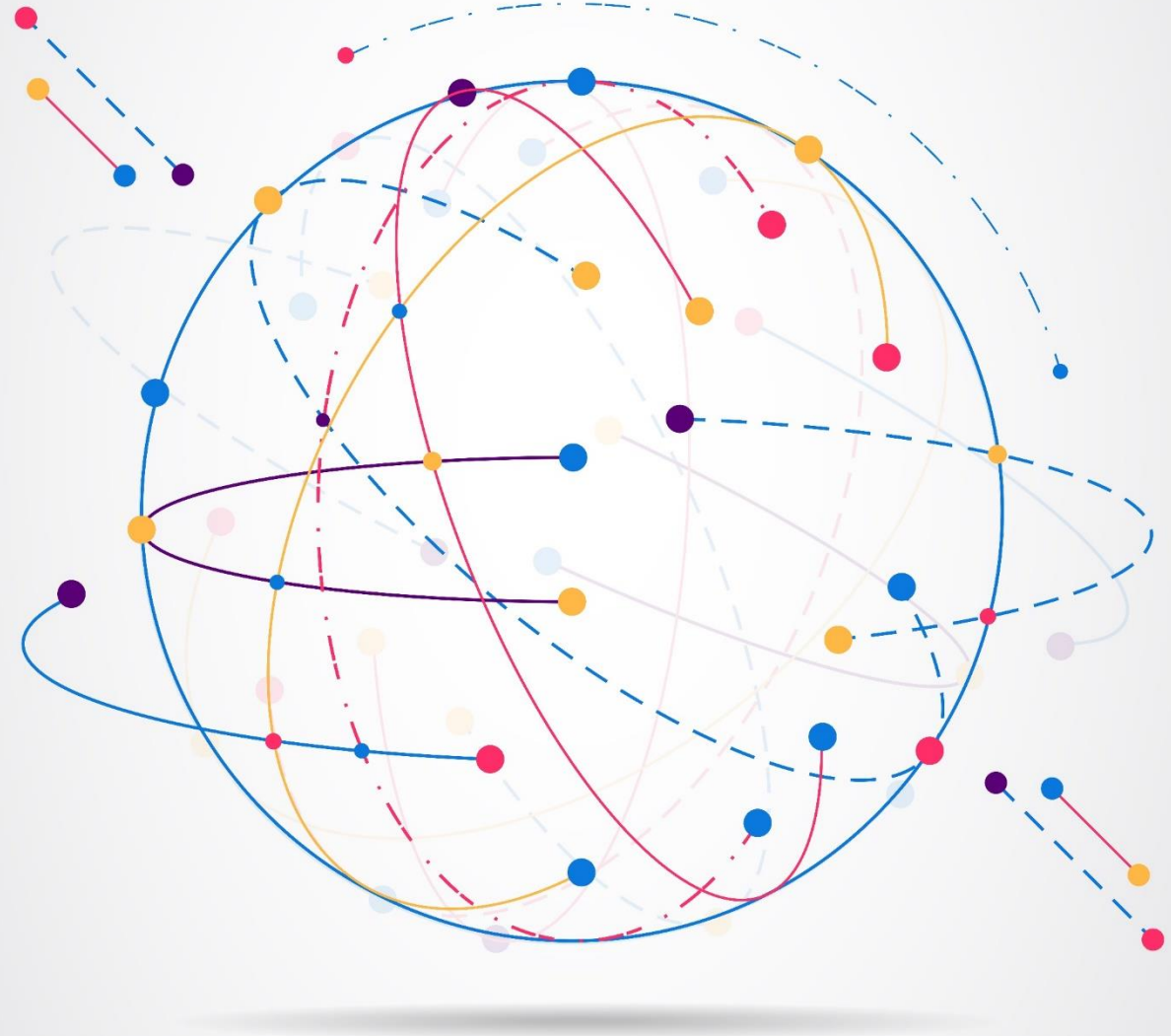
- ▶ **450** Outgoing students
- ▶ **400** Incoming students

AGREEMENTS

- ▶ **220** Exchange Agreements
- ▶ **44** Double Degree Agreements

STUDYING ABROAD? A GUIDELINE TO CHOOSE YOUR MOBILITY EXPERIENCE

- What am I seeking from this experience?
- How long can I stay abroad?
- Where can I go to?
- How much can I be flexible?





*When you're curious,
you find lots of
interesting things to do.*



Freedom and happiness are found in the **flexibility and ease** with which we **move** through **change**.



*Have you got
any plans?*

A GUIDELINE TO CHOOSE YOUR MOBILITY EXPERIENCE

Standard “Erasmus” exchanges

Normally 1 semester abroad (on average 30 ECTS credits)

More than 200 destinations worldwide

Both at BSc and MSc level

+450 outgoing students every year

International Alliances

Normally 1 year abroad (depending on the programs), possibly in more sites

Alliance4Tech
UNITECH

MSc level

International Double Degrees

1,5-2 years abroad
International Double Degrees promoted by POLIMI (40+ programs), at BSc and MSc level

International Dual Degrees promoted by SoM-POLIMI (Audencia, Solvay, Tongjii, Tsinghua), only MSc level

THE “INTERNATIONAL MOBILITY” PROCESS @ POLIMI



Student



**International Mobility
Offices**



**CCS Mgt. Engineering
Intl Commission**

2) Participates in the
Mobility Call (demand)

4) Accepts the location
assigned to them

1) Launch the Mobility Call
(offer)

3) Evaluate the candidates and
define a merit list

POLIMI “INTERNATIONAL MOBILITY” CALL

First International Mobility Call*

<https://www.polimi.it/en/campuses-and-services/international-mobility/study-abroad/the-call>

Deadline **January 10, 2025 at Midday**

It is NOT *first come first serve*. Take your time to make an informed decision

The second International Mobility Call will be published on April 2025

***From this academic year, students can apply to the UNITECH program right from the International Mobility Call (including the UNITECH project as their first preference)**

«EXCHANGE YOUR MIND» EXPERIENCE

The *International Mobility Unit* is holding several **info sessions** to explain all procedures, rules and requirements related to the **2025/26 International Mobility Call**

It is **STRONGLY RECOMMENDED** to attend

For a **full list of the sessions**, please see:

<https://www.polimi.it/en/campuses-and-services/international-mobility/study-abroad/the-call>

Don't forget to sign up to the Instagram [@polimi_exchange](#) and listen to the [Podcast Polimi Explorers!](#)

THE POLIMI MAP OF PARTNER UNIVERSITIES

- *Look at the [Map of Partner Universities And Mobility Agreements](#)*

Map of partner universities and mobility agreements

Discover the exchange partner universities of Politecnico di Milano

Map List

Filter locations by:

Nation



School



Type of agreement



- Select «List» view and filter by Nation, School and or by Study Programme

THE MANAGEMENT ENGINEERING GUIDES & SUPPORT MATERIALS

POLITECNICO MILANO 1863

WHERE WE ARE COOKIE POLICY (UE) ITALIANO ENGLISH

SCHOOL OF INDUSTRIAL AND INFORMATION ENGINEERING


Management Engineering

HOME PAGE PRESENTATION ▾ BACHELOR OF SCIENCE ▾ MASTER OF SCIENCE ▾ INTERNATIONAL EXPERIENCES ▾ EXTRA-CURRICULAR ACTIVITIES ▾ AFTER GRADUATION ▾ CONTACTS ▾

International Experiences

- Short-Term Exchanges (1-2 Weeks)
- Long-Term Exchanges (1-2 Semesters)
- International Double Degrees
- Get Ready

A network of over 200 partners

A large, abstract graphic representing a network. It features a dark blue background with numerous thin, light-colored lines connecting various points, creating a complex web of connections. The lines are of varying lengths and directions, suggesting a global or multi-disciplinary network.

You will find all the available information regarding Study Abroad programs on the Management Engineering website: <https://management-eng.polimi.it/en/international-experience/>

THE ME GUIDES & SUPPORT MATERIALS

WHO

HOW

WHY

WHERE

WHEN

...plan an international experience?

A CONCISE GUIDE TO INTERNATIONAL MOBILITY

**Useful tips for a successful and satisfying international
mobility experience**

**International Mobility Commission
CCS Management Engineering
Politecnico di Milano**

**A broad overview of the
process and key factors to
consider**

THE ME GUIDES & SUPPORT MATERIALS

A detailed guide of the rules that apply to international exchanges within the Department and at the Polimi level.

USE THIS! Don't refer now to the Faculty advisors – their role is to support you with your Learning Agreement, after you will be assigned a destination

<https://management-eng.polimi.it>

>INTERNATIONAL
EXPERIENCES>GET READY

International Exchange Guide for Management Engineering Students

Document issued by the Management Engineering
Internationalization Commission

Version 2.8 – December 2023¹

1 Introduction

Politecnico di Milano – as part of its internationalization strategy - offers students different exchange and international mobility opportunities, from the traditional Erasmus program (recently re-launched as Erasmus+), to Double Degrees in collaboration with prestigious foreign universities, to special programs (e.g. ATHENS, UNITECH, Alliance4Tech, GLOBALES, etc.). The details of all the mobility programs are available on the Polimi [website](#).

The Management Engineering degree program strongly supports the University strategy, by offering exchange and mobility programs to over 350 students per academic year at 200 universities worldwide, resulting as one of the courses with the highest level of exchanges within Politecnico.

Given these relevant numbers, the Course of Study Council (CCS) in Management Engineering has appointed a team (**Internationalization Commission**), in charge of managing the evaluation procedures, as well as planning and validating the mobility programs. The Commission carries out its activities under the mandate received from the CCS, in collaboration with the office in charge of international mobility programs (**International Mobility Unit**) that manage all administrative procedures, in compliance with the guidelines set by the School of Industrial and Information Engineering.

The Commission is comprised of six members, all CCS professors, organized in "Geographical Areas" and in "Subject Areas" of expertise:

- Sergio Terzi, Commission Coordinator, "Special Programs" (e.g. Double Degrees, ATHENS, UNITECH, Alliance4Tech, SustainT, IdeaLeague, etc.) Contact Person, as well as Contact Person for the Geographical area "Asia, (China, Japan, Korea, India etc.), Eastern Europe, Ireland", and also Discipline Area Contact Person, ✉ sergio.terzi@polimi.it, t 2803.
- Cristina Di Stefano, "France and United Kingdom" Geographical Area Contact Person, and also Discipline Area Contact Person, ✉ cristina.distefano@polimi.it.
- Anna Paola Florio, "Finland, Norway, Sweden, Baltic Countries, Russia" Geographical Area Contact Person, as well as Discipline Area Contact Person, ✉ anna.florio@polimi.it, t 2754.
- Simone Franzò, "Austria, Belgium, Denmark, Germany, The Netherland, Switzerland" Geographical Area Contact Person, as well as Discipline Area Contact Person, ✉ simone.franzo@polimi.it, t 4869.
- Luca Gastaldi, "Extra-Europe Countries" (Africa, North-America, Latinamerica, Australia) Geographical Area Contact Person, as well as Discipline Area Contact Person, ✉ luca.gastaldi@polimi.it, t 4758.
- Elisa Negri, "Spain and Portugal" Geographical Area Contact Person, as well as Discipline Area Contact Person, ✉ elisa.negri@polimi.it, t 3969.

¹This document is a work in progress. For any feedback, comments, and suggestions on this guide, please email the Internationalization Commission Coordinator, Prof. Sergio Terzi: sergio.terzi@polimi.it. This guide adapts to the specific context of the CCS of Management Engineering the broader regulations settled by the School of Industrial and Information Engineering, available at the following [link](#) (in Italian only).

STANDARD “ERASMUS” EXCHANGE

More than **200 destinations** worldwide

Students must **define their courses** in advance... but don't worry, if necessary, you can change them!

The “**experience**” is more important than the credits!

Normally it is based on one **semester abroad**; extensions can be requested according to interest and pending availability

Every year nearly **450 ME** students take part in the experience, applying to the **Mobility Call**

See also the [Rules of the School](#) for details!

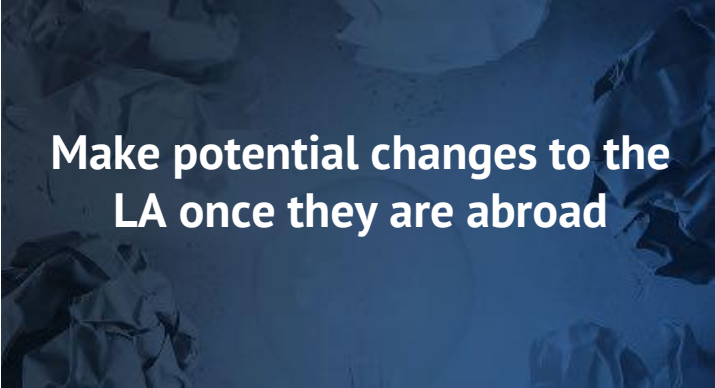
STANDARD “ERASMUS” EXCHANGE – INTERNATIONALIZATION COMMISSION

ME Students will refer to a Faculty advisor
(**Internationalization Commission**) **ONLY**
AFTER they have been assigned a
destination, to:


For ALL administrative procedures, they MUST refer to the
International Mobility Unit: exchange-bovisa@polimi.it



Fill in the **Online Learning Agreement** for the exchange



Make potential changes to the
LA once they are abroad



Validate the credits of the
courses taken abroad

INTERNATIONAL DOUBLE DEGREES PROMOTED BY POLIMI

More than **40** locations

Approx. **5-10** students from ME every year, based on the internal competition – agreements open to several Course of Studies

Most of the double degrees have a minimum threshold (generally, an average **>26/30**)

Typically based on earning **120 credits abroad (2 years!)**

Students should define their **study plan** according to the available course options (which may change every year)

Be prepared to be patient and flexible for such an intensive experience!

INTERNATIONAL DOUBLE DEGREES PROMOTED BY POLIMI-SOM

Dedicated programs
for ME MSc students

Approx. 3-10
positions for each
institution every year

1,5 years abroad (80-
90 credits)

Suggested Majors
for each institutions

Only for MSc students

Minimum threshold =
average >26/30

Each program has its
specific rules and
study plans



INTERNATIONAL DOUBLE DEGREES PROMOTED BY POLIMI-SOM

Detailed prospects are available on the [Management Engineering website](#)

Specific mobility programs for Management Engineering

Audencia Nantes School of Management



Solvay Brussels School of Economics and Management



Tongji University



Tsinghua University



INTERNATIONAL DOUBLE DEGREES PROMOTED BY POLIMI

**1st year of the MSc @ POLIMI
(60-70 credits)**

**2nd year of the MSc @ the
host institution
(60-70 credits)**

**Internship and final work
@ the host institution**

INTERNATIONAL ALLIANCES

POLIMI is a proud member of several international networks and alliances, which promote international mobility and multi-cultural experiences

Alliances give POLIMI students the possibility of becoming part of international networks, broadening their professional opportunities

Each Alliance has its rules

**UNITECH
(for all POLIMI students)**

**ALLIANCE4TECH
(for Management,
Mechanical & Computer
Science students)**

INTERNATIONAL ALLIANCES – UNITECH

Up to 1 year abroad,
in one site

3 weeks throughout
the year of mutual
experiences (in 3
other sites)

Approx. 20 extra
credits to be done,
on top of the
required credits

UNITECH standard
study plans exist, based
on partner schools'
academic offering

From this year, part of
the regular
International Mobility
Call

Approx. 1-2 ME
students per year,
based on internal
competition



INTERNATIONAL ALLIANCES – ALLIANCE4TECH

“Free mobility” idea:
students can move
amongst European
campuses, earning credits

It is based on a 2-
semester abroad
approach

A list of available
courses for each
university is
available

Part of the regular
International Mobility
Call

ALLIANCE  TECH



For further information: www.alliance4tech.eu

INTERNATIONAL ALLIANCES – ALLIANCE4TECH

**At least 60 credits to be taken
@ POLIMI
(only for MSc courses)**

**Semester abroad in Berlin,
Paris**

**Semester abroad in Berlin,
Paris**

A list of available courses for each site is available, and it is annually revised

INTERNATIONAL ALLIANCES – HOW TO CANDIDATE TO ALLIANCE4TECH

Read the instructions
about the programme:
www.alliance4tech.eu

Apply online to the
POLIMI “International
Mobility Call” - follow the
instructions carefully!

Select “Alliance4Tech” as
a preference (you will
select your destinations
later)

A small [guide](#) to help you
getting familiar with the
programme and its main
characteristics

Alliance4Tech

ALLIANCE 4.TECH

Alliance4Tech is a strategic alliance, formally established in 2015, among 4 prestigious European technical universities:

- Centrale Supélec of Paris
- Politecnico di Milano
- TU-Berlin
- University College London

Alliance4Tech combines four institutions of excellence, different in culture and location, but with the same passion for human and technological evolution, in the economic heart of Europe. Its goal is to create a real **European Campus** without borders for its students and professors. Alliance4Tech offers talented and deserving students an innovative educational path, during which they can carry out their studies in **at least three different countries**.

Students can apply to the programme by participating in the **international mobility call**. The selected students have the opportunity to choose to spend a full semester in Berlin and/or a full semester in Paris. While applications may be submitted during the last year of the Bachelor's Degree, participation in the Alliance4Tech programme will be open to **MSc students only**.

To find out more, please visit the Alliance4Tech website.

DOWNLOAD:

Alliance4Tech – Presentation

Guida Alliance4Tech

STUDYING ABROAD? THE FREE MOVER EXPERIENCE

Students may also decide to study abroad independently, as Free Movers:

- To **take courses for one semester** and transfer credits back to Polimi (only @Universities that are NOT Polimi partners)
- To work abroad on their **final thesis research** (while maintaining a Polimi supervisor)

Information can be found on the Polimi website:

<https://www.polimi.it/en/campuses-and-services/international-mobility/study-abroad/the-opportunities/erasmus-and-other-programmes>

STUDYING ABROAD? THE FREE MOVER EXPERIENCE

Free Mover students:

- Will apply to the foreign university **independently**, with no support from Polimi offices, following the host institution's deadlines
- Will be required to **pay tuition** @ the foreign university and **will not** benefit from a Polimi scholarship
- Will have to submit a request on the Polimi online services and seek approval **PRIOR** to their departure (**minimum GPA 24/30**)
- When enrolling in courses, they will need to identify a **well-ranked** and suitable university to motivate this choice, discussing their options with Prof. Terzi, Academic Coordinator for Exchanges and Mobility @DIG

STUDYING ABROAD? UIC-POLIMI DOUBLE DEGREE (MSC) – FREE MOVERS

The Polimi Management Engineering Department offers a Double Degree Program with the **University of Illinois at Chicago, Department of Industrial Engineering and School of Business.**

The program is **not** included in the Polimi International Mobility Call (students will be considered Free Movers).



Applications follow UIC deadlines (every October for February intake).
Periodic presentations will be held for students

Please check:

[International Double Degrees – Management Engineering](#)

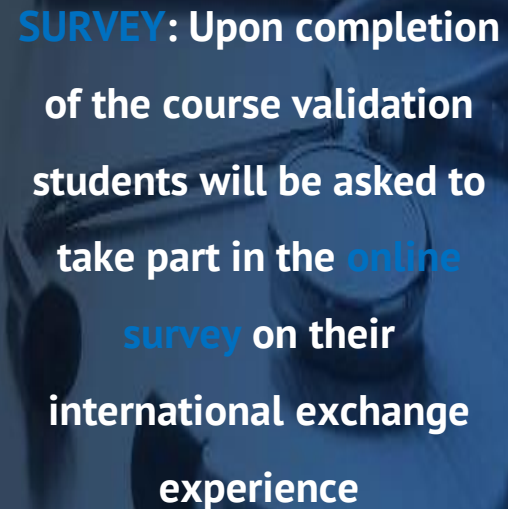
For further information:
international-dig@polimi.it



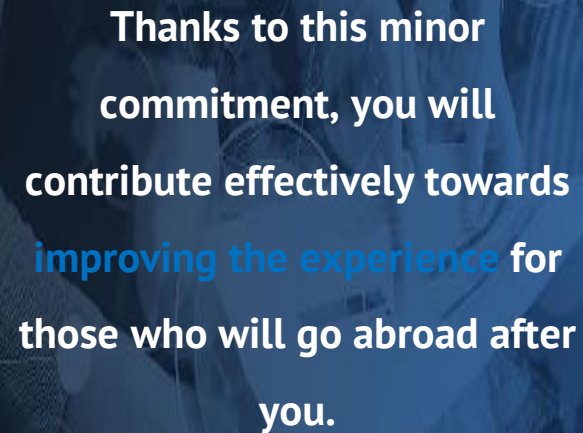
UNIVERSITY OF
ILLINOIS CHICAGO

WELCOME
BACK

UPON YOUR RETURN - SUPPORT INTERNATIONAL MOBILITY @DIG

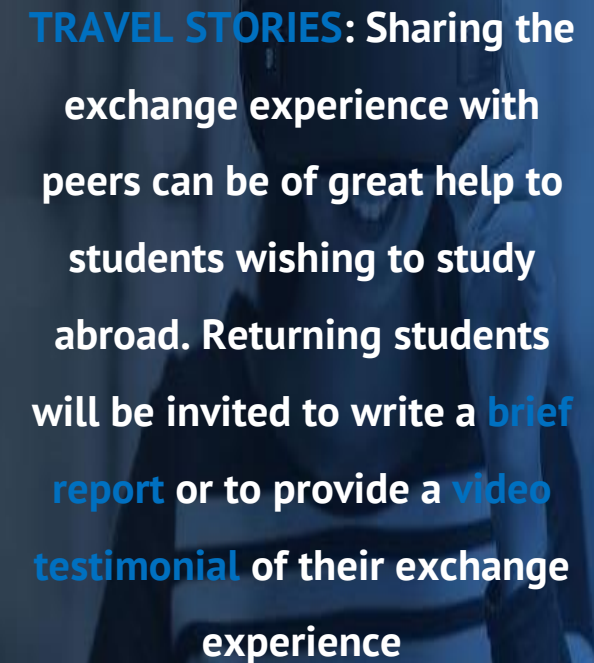


SURVEY: Upon completion of the course validation students will be asked to take part in the **online survey** on their international exchange experience



Thanks to this minor commitment, you will contribute effectively towards **improving the experience** for those who will go abroad after you.

Thank you!



TRAVEL STORIES: Sharing the exchange experience with peers can be of great help to students wishing to study abroad. Returning students will be invited to write a **brief report** or to provide a **video testimonial** of their exchange experience

NEXT SESSION FOR: MANAGEMENT ENGINEERING STUDENTS

**Tips and Tricks: How to Plan a Successful Mobility Experience
+ Q&A Session**

December 9th, 2024 at 5 pm

You can attend the meeting via Webex

<https://politecnicomilano.webex.com/meet/sergio.terzi>

DON'T MISS IT!