



**POLITECNICO**  
MILANO 1863

# BACHELOR OF SCIENCE IN MANAGEMENT ENGINEERING



---

# POLITECNICO DI MILANO



Politecnico di Milano is one of the most outstanding universities in the world, **ranked 18<sup>th</sup> in the World, 7<sup>th</sup> in Europe, and 1<sup>st</sup> in Italy** according to **QS World University Ranking by Subject 2023 - Engineering & Technology**. Founded in 1863, it is the largest school of Architecture, Design and Engineering in Italy, with 2 main campuses located in Milan, heart of fashion and design industries, and 5 campuses based around the Lombardy region, one of the most industrialized areas of Europe. Many important scientists and architects studied and taught here; among them Achille Castiglioni, Gio Ponti, Renzo Piano and Aldo Rossi - both Pritzker Prize in 1990 and 1998 respectively - and Giulio Natta, who was awarded the Nobel Prize in Chemistry in 1963.

Politecnico di Milano is organized into 12 Departments, responsible for planning of the research strategies, and 4 Schools, responsible for the organization of education, 2 of them covering the fields of Engineering, 1 focused on Architecture, Urban Planning and Construction Engineering, and 1 School devoted to Design.

Thanks to a strong **internationalization policy**, several **study programmes are taught entirely in English**, attracting an ever-increasing number of talented international students, now forming a diverse community from more than 100 countries.

**Inter and multidisciplinary approaches** are fostered throughout the academic career, in particular at the PhD School and the ASP (Alta Scuola Politecnica), a school for young talents from all over the world, who develop their skills in a team work context to pursue complex innovation projects. **Teaching is closely related to research**, a key commitment that enables to achieve results of high international standards, while creating connections with the business world.

**Strategic research** is carried out mainly in the fields of energy, transport, planning, management, design, mathematics and natural and applied sciences, ICT, built environment, cultural heritage, with more than 250 laboratories, including a Wind Tunnel (unique in the world for configuration and features), a Crash Test Centre, PoliFAB (the University's lab for micro and nano production) and PoliFactory, a laboratory where new design processes are developed.



# POLITECNICO DI MILANO SCHOOL OF MANAGEMENT

The School of Management was established formally in 2003 and it groups together Polimi Graduate School of Management (founded in 1979) and DIG (Department of Management, Economics and Industrial Engineering - Dipartimento di Ingegneria Gestionale), established in 1990, bringing together all research and education activities in the field of management.

## The School of Management has three main features:



An essential focus on the themes of innovation, change and digital strategy to support and guide business



Inescapable attention is placed on the rational, scientific and quantitative approach. Typical of the engineering mindset



Continuous research with an interdisciplinary approach in research and teaching, thanks to our access to the skills and professionalism of the Politecnico di Milano ecosystem

## OUR VALUES

The School of Management shares its founding values with its University

### INTEGRITY

*Faculty members, staff, students and our partners act in full respect of the law, rules and practices. Illegal and unethical behaviour must be rejected under all circumstances.*

### RESPECT

*We expect Faculty members, staff, students and our partners to show full respect for other people's needs, the environment and society. Respect is a prerequisite for valuing and supporting an international environment in which diversities of gender, culture, beliefs, personalities, political ideas and backgrounds positively influence one another.*

### EXPERTISE

*Research and education must both relate strongly to the economy and the corporate world in order to support an effective transfer of knowledge to the community.*

## ACCREDITATIONS & RANKINGS





---

## Gioia Ferrario

HR Director Italy, Greece & Turkey,  
Boston Consulting Group

The experience at Politecnico helped me to develop strong competences both from a technical and from a managerial perspective. It gave me the tools to think strategically and deal with the changes that are taking place in the world.

I think this is very important for the new generations of engineers and it is one of the aspects I always search for when I interview new candidates. I feel this can make the difference in the current competitive context.

---

# DEGREE IN MANAGEMENT ENGINEERING

The modern world has seen the development of complex systems, with a **strong interaction between technical, economic, and organisational aspects**, fostering the need for a new professional figure that stays at the intersection of these aspects and manages them in an innovative way. This role has been increasingly adopted by engineers who enriched their abilities with strong managerial competences, leading to the rise of a new breed of professionals: the **manager-engineers**.

Blending strong scientific knowledge and approach with deep managerial competence, Politecnico di Milano has been able to create a formal degree course to train this **emerging professional figure** that has evolved naturally throughout the industrialised world.

The Management Engineering Programme is structured in a three-year bachelor's degree and a two-year Master of Science degree.

Management Engineers work in all types of industries and sectors and cover a wide-reaching range of activities, such as designing and managing production and logistics systems, strategic planning, business organisation and management, economics, planning and managing technology and innovation, internationalization processes, management control systems, corporate and market finance, economics and management of companies in regulated sectors and network services, large-scale project planning and management, internet applications and ICT management.



---

# BACHELOR OF SCIENCE IN MANAGEMENT ENGINEERING

## A SCIENTIFIC AND ENGINEERING BACKGROUND INTEGRATED WITH A WIDE KNOWLEDGE OF ECONOMICS AND MANAGEMENT

The **Bachelor of Science in Management Engineering** produces a professional figure with a solid background. The first year has a strong component of scientific disciplines and introduces some engineering and economic disciplines.

In the second year, modelling skills are studied in detail, digital engineering skills are provided and the business structure and its operational activities are analysed. In the third year, students can study an engineering discipline of their choice more in depth and deal with management, organizational and industrial dynamics, with special emphasis on data analysis. Moreover, an overview on the macroeconomic context is provided.

The educational programme ends with an internship in a company or a laboratory project, which allows students to apply the models and methods learned during the course to real contexts.

Subject to an evaluation of their curriculum, graduates in Management Engineering can continue their studies in the Master of Science in Management Engineering. Graduates may also choose other Master of Science programmes or 1<sup>st</sup> level Specialising Masters programmes.

## ASSESSMENT CENTER

Third-year students have the possibility to assess their behavioural skills in the Assessment Center, managed by Politecnico di Milano Career Service and run by professional assessors.

By performing activities such as working groups on case studies and individual interviews, each student has the opportunity to learn more about his/her strengths and areas of improvement, such as decision making, problem solving, communication and leadership skills, and receive individual feedback.





## KEY FACTS



**FORMAT**  
3 years - full time



**SELECTION PROCEDURE**  
by admission test with a limit on the maximum number of students



**LANGUAGE**  
Italian\*



**INTAKE**  
Yearly - September



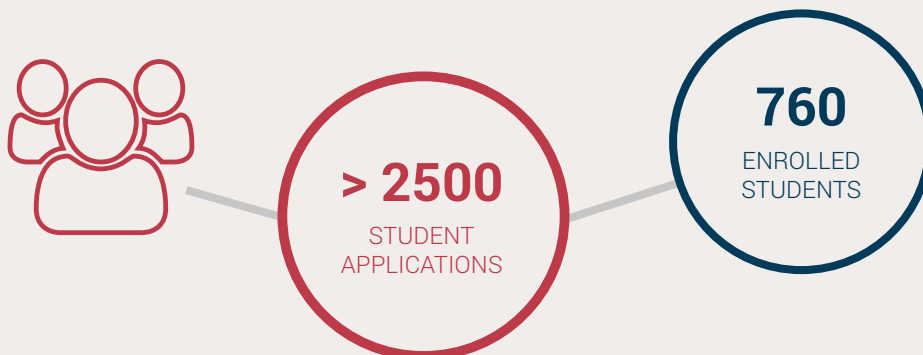
**ECTS**  
180



**FOR FURTHER INFORMATION**  
[www.management-eng.polimi.it](http://www.management-eng.polimi.it)

## SELECTION PROCESS

*(average data related to the last three years, from 2021/22 to 2023/24)*

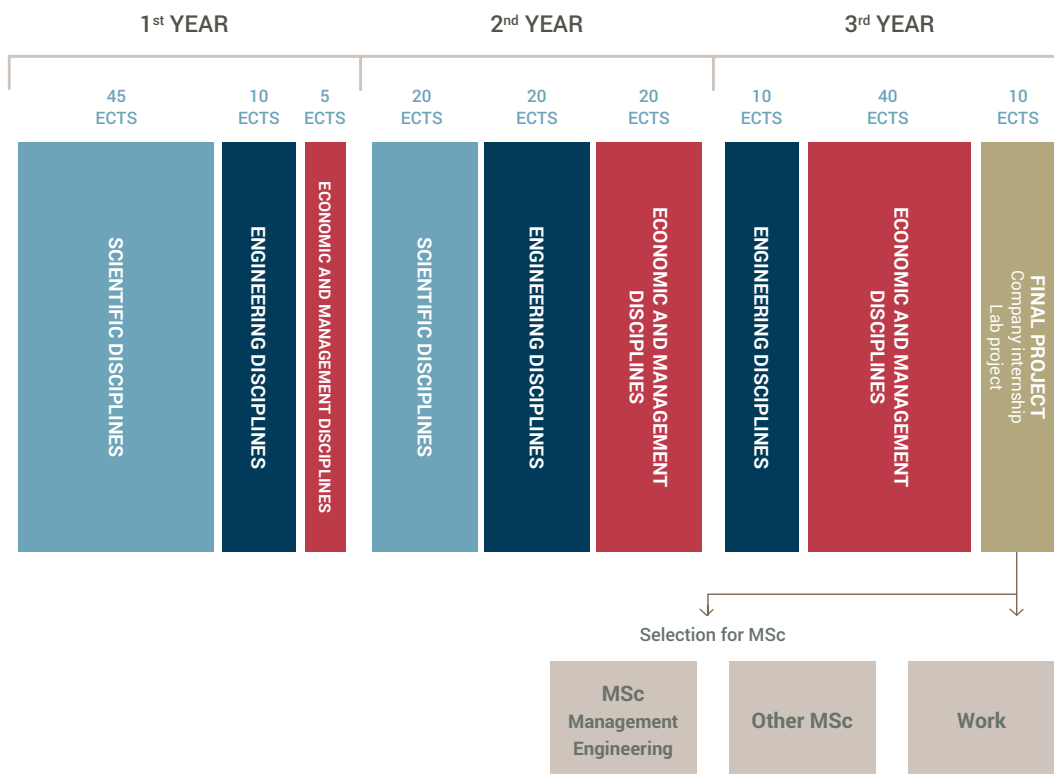


\*Starting from the 24/25 academic year, in the third year of the Bachelor's Degree an additional section taught in English will be activated. The courses that will be taught English are: Economics 2 (Macroeconomics), Business Management and Organization; Industrial Plants Management.





# BACHELOR STRUCTURE



---

# MILANO

## CAMPUS BOVISA



Located in the north-western area of the city, the Milano Bovisa campus is located in the area of the former gasometers. The site was considerably enlarged following an international competition announced in 1998 by the Politecnico di Milano in collaboration with local authorities (Municipality and Region) and which led to a general redevelopment of the area.

Milano Bovisa is divided into two campuses:

One in via Candiani (Design);

One that extends between via La Masa and via Lambruschini (Engineering).

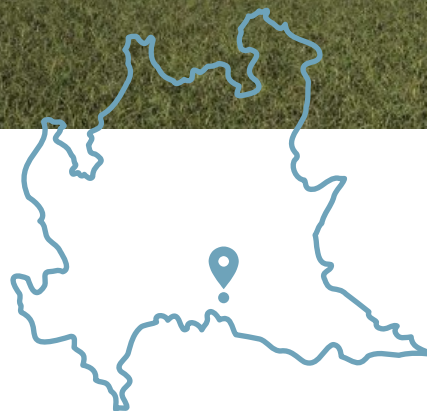






---

## CREMONA CAMPUS



The Politecnico di Milano has been present in Cremona since 1987 with a site that integrates the traditional quality of teaching and research with a specific attention to the evolution of the labor market of the territory and a solid network with local businesses, creating the best conditions for the professional success of graduates.

The Cremona Campus offers the excellence of a great School in a welcoming and lively city, a large number of laboratories, study experiences abroad and internships with many partner companies.

A new Campus is under construction, thanks to Arvedi Buschini Foundation, within which there will also be a university residence.

For more details, visit the [Cremona Campus website](#).

# STUDENTS & ALUMNI EXPERIENCES

**Giacomo Buratti**

*Bachelor*



**Carlo Taddia**  
*Master of Science*



**Valeria Tiberi**  
*Master of Science*



**Anna Bisogni**  
*Bachelor*



**Michele Gerometta**  
*Master of Science*



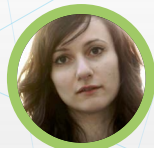
**Michele Capitanio**  
*Bachelor*



**Alessandro Paravano**  
*Master of Science*



**Marco Guerini**  
*Bachelor*



**Giada Giotta**  
*Bachelor*



discover their experiences here >

**Fabio Dinale**

*Executive Vice President Business Development,  
Hitachi Zosen Inova*



**Luigi Binelli**

*Group Chief Supply Chain Officer and  
Manufacturing Director Italy, MTD Medical  
Technology and Devices*



**Sergio Solero**

*Vice President Retail  
Development, BMW Group*



**Paola Scarpa**

*Managing Director & Partner,  
Boston Consulting Group*



**Roberta Regis**

*Group Chief Transformation  
Officer, PRG Retail Group*



**Paolo Poma**

*Chief Financial Officer  
& Managing Director,  
Automobili Lamborghini S.p.A.*



**Tiziana Olivieri**

*Europe Chief Sales Officer,  
Avanade*



**Alessandra Brambilla**

*Chief Operating Officer,  
Western Europe,  
Microsoft*



**Simona Pasero**

*Head of Human Resources  
& Organization,  
Generali Investments*



**Davide Di Domenico**

*Managing Director & Senior  
Partner, BCG*



---

# MOOCs

## Online courses

**POK** (Polimi Open Knowledge) is the **MOOCs** portal (Massive Online Open Courses) providing online courses, free and open to everybody.

The main objective of the portal is to support the students, not only from Politecnico di Milano, in crucial stages of their educational and professional career: from high school to university, from bachelor's to master's degree, and from university to the workplace.

Courses are open to everybody: it is sufficient to register on the portal to access videos, content, activities and self-assessment tests.

Several MOOCs are **designed specifically for Management Engineering students**, both at the Bachelor and the Master of Science levels, and are available in English and Italian. Some of these include Fundamentals (Organization, Economics, Operations, Strategy, Financial and Management Accounting, Project Management beyond Planning and Control) from the series **Introduction to Management Engineering**, designed to introduce prospective master students and people interested in managerial disciplines to the key fundamentals of Management Engineering. Other courses are dedicated to Methodology (Survey Research, Case Study), etc.

The technology platform is a customization of **Open-EDX**, the open source platform released by EDX - the initiative resulting from a joint venture between MIT and Harvard.

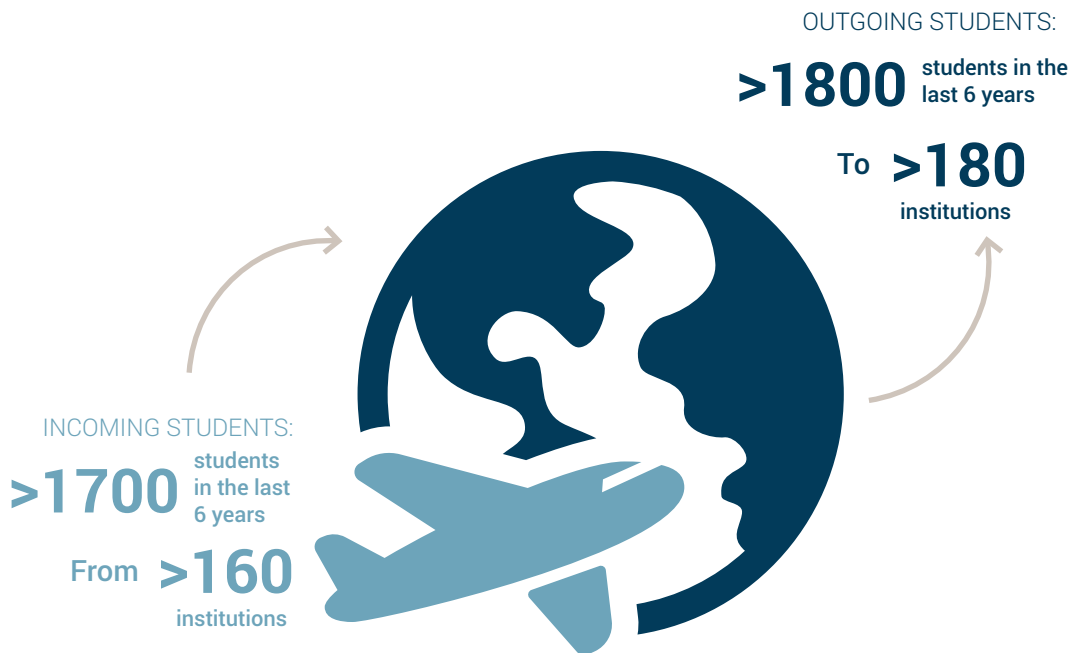
Discover active MOOCs at: [www.pok.polimi.it](http://www.pok.polimi.it)

# INTERNATIONALIZATION

A network  
of over  
**200**  
partners

The Management Engineering Degrees at Politecnico di Milano offer many opportunities for international exchange and mobility experiences: the classic Erasmus programme, Double Degrees in collaboration with prestigious foreign universities, and special programmes with different durations, ranging from a few days to one year.

Exchanges with over 200 international institutions on all continents are available to students. Every year over 450 Management Engineering students go abroad, while we greet the same number of incoming exchange students on our campuses.



*These numbers pertain to Management Engineering students only*

# INTERNATIONAL NETWORKS



## > ALLIANCE4TECH

**Alliance4Tech** consists of four Top Engineering Institutions of different European cultures, located in global cities in the economic heart of Europe, forming a European Campus without borders for their students and faculties.



The Alliance4Tech Partner Universities (Politecnico di Milano, TU Berlin, University College London, CentraleSupélec Paris) will enhance and develop the following initiatives for their prospective and respective students:

- > **Free-mobility/Full flexibility** to switch from one city to another every semester, if there is former official approval of both the home and host Institutions
- > **Practical activities** and new pedagogical approaches
- > **Internship** opportunities in companies
- > **Seasonal Schools** in scientific fields and/or soft skills and employability and/or any fields of common interest
- > A multicultural and geographically **diverse environment** with students coming from within Europe and outside Europe alike

For more information [www.alliance4tech.eu](http://www.alliance4tech.eu)





> **IDEA LEAGUE**

The **IDEA League** is a focused network of leading European Universities of science and technology. Its members are TU Delft, RWTH Aachen, ETH Zurich, Chalmers University and Politecnico di Milano.

## IDEA League

A focused network of leading European universities of science and technology

The IDEA League organizes Summer Schools, Doctoral Schools and tracks for highly talented students. Within the IDEA League network students, researchers and supporting staff collaborate to improve education, research and quality assurance.

For more information [www.idealeague.org](http://www.idealeague.org)

---

> **UNITECH**

The **UNITECH International Society** was founded to allow the academic and corporate world to jointly educate a group of talented young engineers, to enable them to successfully manage future challenges in the global industry. This International Mobility Programme is aimed at students interested in deepening their technical-scientific knowledge and in developing managerial skills in an international environment, integrating a period of studies abroad with an internship in a multinational firm, while also providing a platform for networking and exchange of ideas.

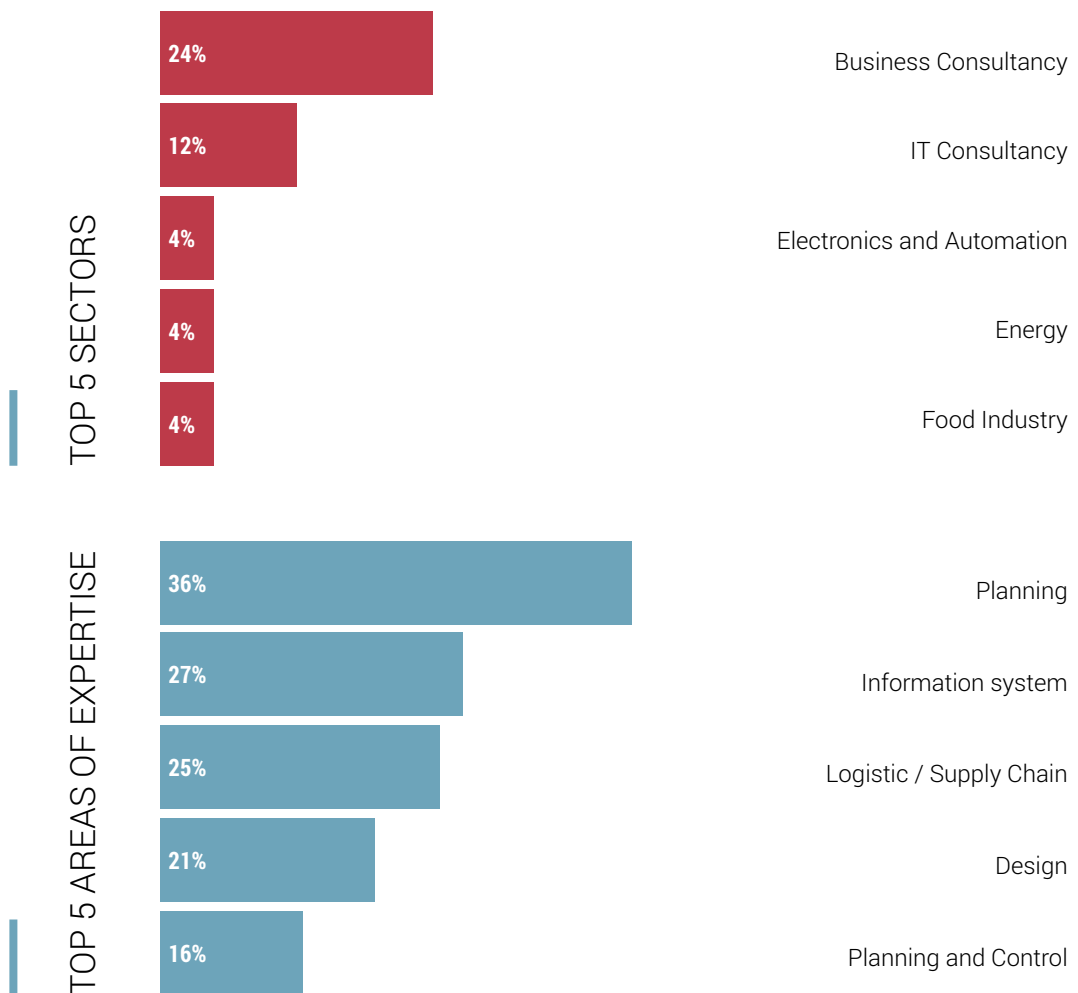


For more information [www.unitech-international.org](http://www.unitech-international.org)

# PLACEMENT



Emphasizing the warm welcome given by the world of business to this new breed of professionals, graduates from Politecnico di Milano can find employment in several industrial and service companies, in consultancy firms, banks and financial institutions, the public administration and in non-profit organisations.



Source: Career Service Politecnico di Milano, Survey 2023



## BACHELOR OF SCIENCE



employed

97%



when

93%

6 months

Source: Career Service Politecnico di Milano Survey 2021 - bachelor's degree. The survey is addressed to bachelor's degree graduates, a year from their graduation date.

## MASTER OF SCIENCE



employed

98%



when

97%

6 months

Source: Career Service Politecnico di Milano Survey 2023 - master's degree. The survey is addressed to Msc Degree graduates, a year from their graduation date.



# CONTACTS



ACADEMIC PROGRAMME OFFICE  
management-engineering@polimi.it

www.management-eng.polimi.it  
www.polimi.it/futuri-studenti

## HOW TO REACH OUR CAMPUS:

### FROM CENTRALE FS METRO STATION

Take the M2 green underground (towards Assago Milanofiori Forum/Abbiategrasso), get off at Garibaldi Station (second stop), take the underground urban train (passante) S1 line (towards Saronno) or S2 line (towards Meda-Mariano Comense) or S13 line (towards Bovisa) and get off at the Milano Bovisa Politecnico station (second stop).

**Estimated journey time:** 15 minutes.

### FROM CADORNA FNM METRO STOP

Take the S3 line (towards Saronno) or S4 line (towards Camnago Lentate) or R22 line (towards Varese) and get off at the Milano Bovisa Politecnico station (second stop).

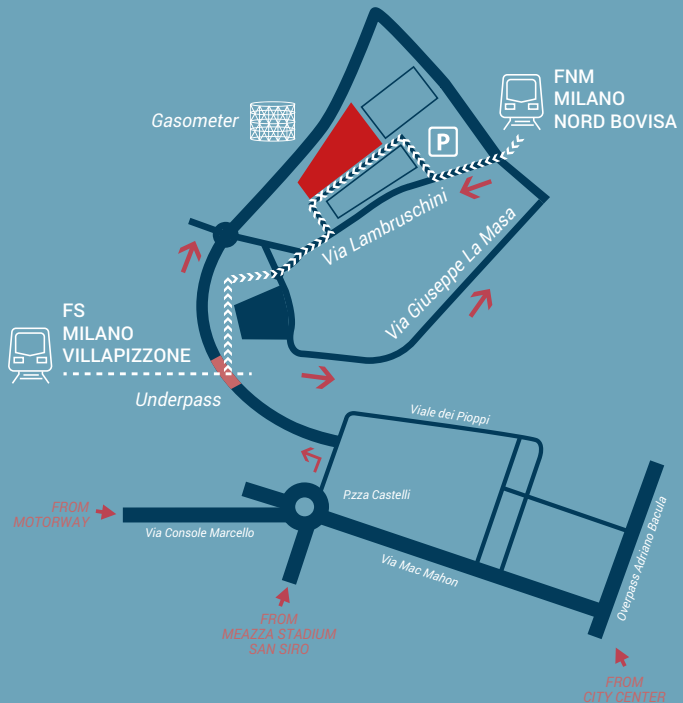
**Estimated journey time:** 8 minutes.

### FROM DUOMO METRO STOP

Take the M1 red underground (towards Rho Fiera-Bisceglie), get off at Cadorna station (third stop), go into the train station and take the S3 line (towards Saronno) or S4 line (towards Camnago Lentate) or R22 line (towards Varese) and get off at the Milano Bovisa Politecnico station (second stop).

**Estimated journey time:** 15 minutes.

**Alternative route:** Take the M1 red underground (towards Sesto FS), get



off at Porta Venezia Station (third stop), take the underground urban train (passante) S1 line (towards Saronno) or S2 line (towards Meda-Mariano Comense) or S13 line (towards Bovisa) and get off at the Milano Bovisa Politecnico station (fourth stop).

**Estimated journey time:** 25 minutes.











**POLITECNICO**  
MILANO 1863

VIA LAMBRUSCHINI 4/B, 20156 MILANO - ITALY